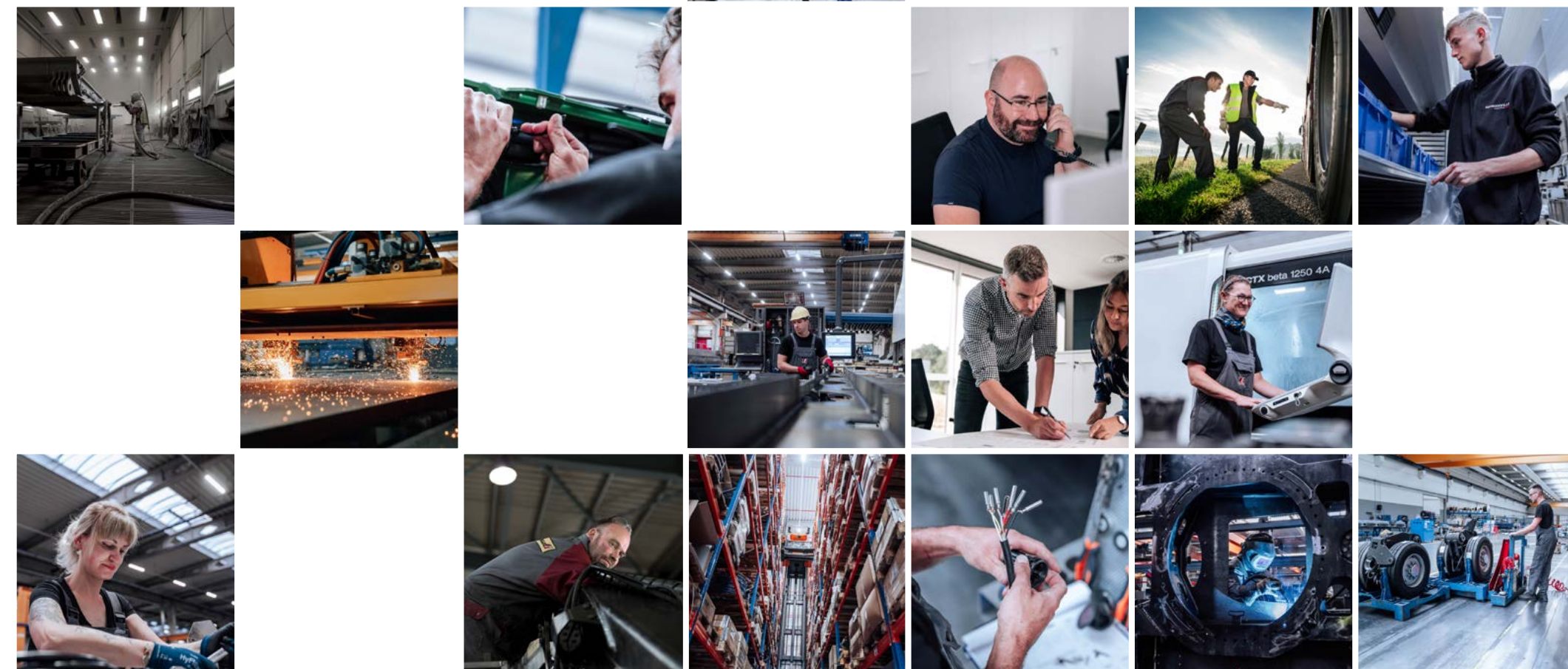


ECO

SMART MOBILITY FOR INTRALOGISTICS





With our three vehicle brands, MAX Trailer, Faymonville and Cometto,
we are the worldwide leading full-range manufacturer of vehicles for heavy load and special transport.
The semi-trailers, low-loaders, modular vehicles and self-propelled trailers that we produce are used to transport anything exceptionally heavy, long, wide or tall!
Our brand portfolio includes transport solutions for payloads from 15t to 25,000t ... and beyond.
The excellent facilities in a production space of 175,000 m² form the foundation for qualitatively unique, high-tech products.



TRADITION & VISION

As a seventh-generation family business, we've evolved from a small forge in Belgium to the industry leader. Alexander Fickers took the helm as CEO of the Faymonville Group in 2024. The Faymonville family remains actively involved and continues to shape the company.

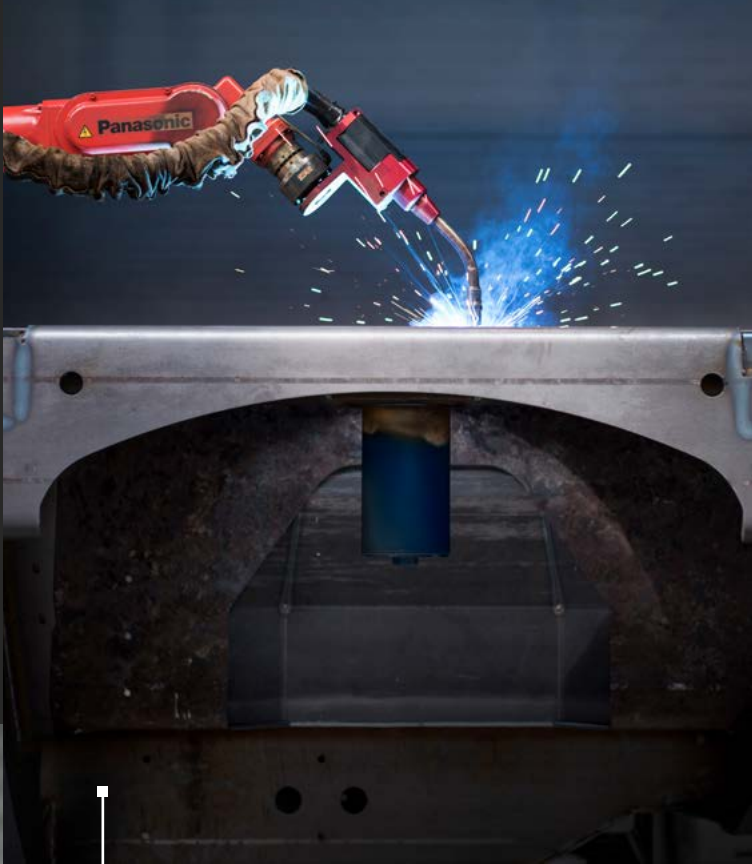
WE OFFER SOLUTIONS

Thanks to an outstanding mix of experience, flexibility and know-how, we provide sophisticated solutions for any transport challenge. From development to production, we offer the necessary expertise every step of the way.



HIGHEST QUALITY 100% IN-HOUSE

We place our trust in our optimized production processes, the high-end infrastructure and machinery park and our team of highly skilled employees. As a company committed to quality, we strive to uphold the highest standards to ensure the excellence of our products.



FAST SPARE PARTS DELIVERY

The modular structure of Cometto vehicles ensures a high proportion of common parts, enhancing construction quality. This benefits customers when ordering spare parts, ensuring maximum interchangeability and reducing material costs while guaranteeing peak performance and lifespan for your Cometto vehicle.



INTENSIVE DRIVER TRAINING

We offer a customized driver training for your specific vehicle, both practical and theoretical. Drivers receive documents and user manuals in their language, along with self-explanatory visual materials. It's a comprehensive support package to ensure drivers are familiarized with their new vehicle efficiently.



ALWAYS & ANYWHERE 24/7

Our comprehensive service guarantees you a worldwide presence, 24 hours a day, 7 days a week. The Faymonville Group offers the most sustainable and comprehensive customer service in the industry.





MOVING GIANTS FOR OVER 70 YEARS

For over 70 years, Cometto has led the way in innovative transport solutions, consistently pushing the boundaries of technology. Their expertise has played a crucial role in major projects such as the NASA Orbiter Space Shuttle, the Panama Canal, and the ARIANE missions, showcasing their dedication to quality, innovation and reliability.

Since being taken over in 2017, Cometto has been the specialist within the Faymonville Group for the development and manufacture of self-propelled modular transporters SPMT capable of handling payloads exceeding 25,000 tons. Their vehicles are vital in industries like heavy-duty transport, shipbuilding, oil and gas, offshore technology and project logistics.

Cometto takes pride in sustainable product quality, modern manufacturing, and exceptional customer service. With 100% in-house production, they ensure flexibility and efficiency, making Cometto a trusted partner for delivering cutting-edge transport solutions for highest payloads.

THE PRODUCT RANGE

The Cometto Eco500 is a compact self-propelled modular vehicle designed for seamless in-plant transport tasks, capable of handling up to 500 tons. With its integrated Power Pack Unit and advanced electronic steering, the Eco500 embodies a forward-thinking modular design that ensures effortless connectivity and operation. Perfect for heavy-duty transport needs, the Eco500 offers a simple „connect and drive“ configuration for maximum efficiency and ease of use.

The Eco500 offers unparalleled flexibility in the market. Available with 2 or 4 axle lines and up to two additional joker axles, these compact vehicles can be combined to meet your specific needs. Thanks to its compact width of just 2.35 metres, the Eco500 can be easily shipped on a flat rack container.

With the option to combine up to 4 different powered units, interchangeable components and a wide range of accessories, the Eco500 ensures you have the versatility and adaptability required for any transport challenge.

500 T

ECO₅₀₀₂

2-axles lines type, with 2 driven suspensions



ECO₅₀₀_{2L}

2-axles lines type, with 2 driven suspensions and long frame



ECO₅₀₀₄

4-axles lines type, with 4 driven suspensions



ECO 502 + JOKER



ECO 504 + JOKER



JOKER + ECO 502 + JOKER



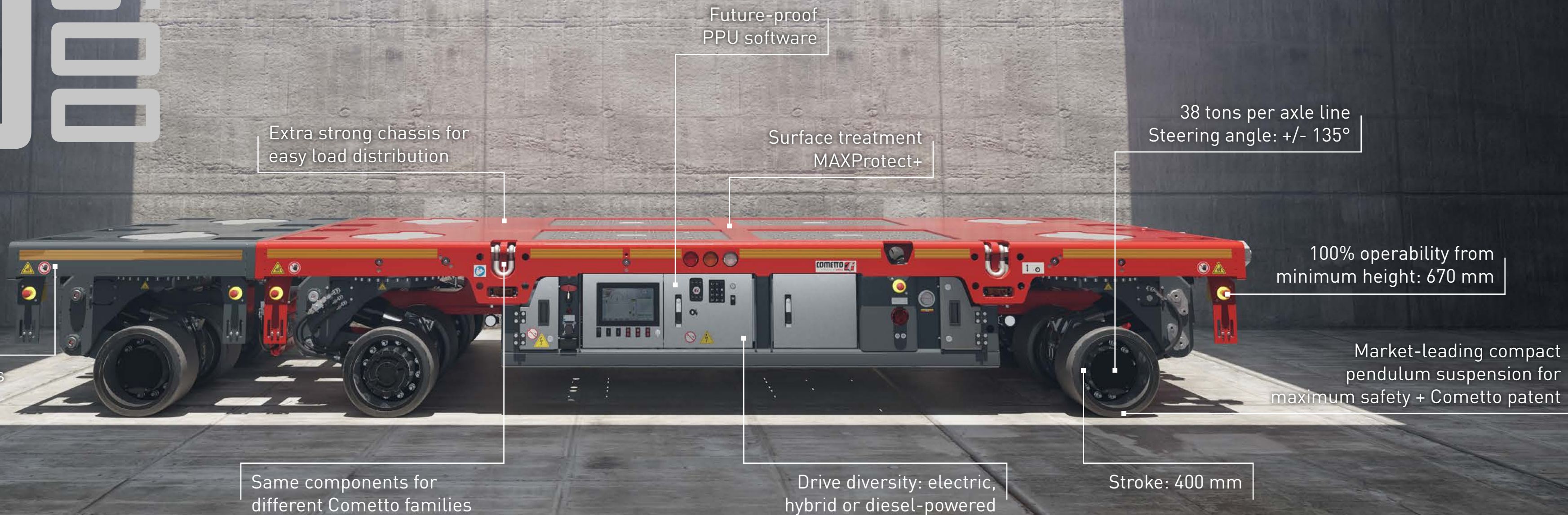
JOKER + ECO 504 + JOKER





ECODE

WHAT MAKES IT UNIQUE



THE STRONGEST CHASSIS ON THE MARKET

PLATFORM

The strong chassis of the Eco500 allows loads to be placed safely and reliably across the entire loading area and it's engineered to meet a wide range of intralogistics needs. The platform is covered with electro-welded steel plates for superior durability.

For easy inspection and maintenance, removable covers are bolted above each suspension and the Power Pack Unit. Lashing points are placed on the sides, while integrated coupling interfaces on all sides allow for connection with other vehicles and accessories.



SUSPENSION, TIRES, RIMS

Suspension: Our advanced suspension system utilizes pendular hydraulic technology, providing an important stroke of 400mm. The patented Cometto suspension is the most compact pendulum suspension on the market and offers outstanding protection and maximum safety for your application. This solution also has the highest ground clearance on the market.

Hydraulic system: The hydraulic system features precision safety valves that automatically activate in case of pipe damage, ensuring prompt shut-off for both rigid and flexible pipes.

Hydraulic transmission: The hydraulic transmission features variable displacement pumps connected through a closed circuit to hydraulic motors on the driven axles. This setup delivers maximum torque, progressive acceleration, making every operation smooth and efficient.

Hydraulic rotor: A hydraulic rotor positioned above the suspension optimizes the platform height space while ensuring high steering angle without any collision of hydraulic lines.

Wheels: The Eco500 is equipped with solid, non-marking polyurethane tires and robust steel rims.

Drive and brake systems: The vehicle features a hydrostatic drive and brake system.

Steering: The electronically steered rotating slew drives are powered by a hydraulic motor, utilizing strong epicyclic drive boxes and endless screws. This advanced steering system is a standard across all Cometto product families, ensuring superior maneuverability and performance.

MAXIMAL FLEXIBILITY

ECO 502 ECO 502L



MODEL	ECO 502	ECO 502 + JOKER	JOKER + ECO 502 + JOKER	ECO 502 L
Loading platform length	5000 mm	6250 mm	7500 mm	7500 mm
Loading platform height - loaded	870 +/-200 mm	870 +/-200 mm	870 +/-200 mm	870 +/-200 mm
Loading platform width	2350 mm	2350 mm	2350 mm	2350 mm
Dead weight	9500 kg	12500 kg	15500 kg	11500 kg
Max. total load	76000 kg	114000 kg	152000 kg	76000 kg
Max. payload	66500 kg	101500 kg	136500 kg	64500 kg
Suspensions	4	6	8	4
Driven/braked suspensions	2	2	2	2
Idle suspensions	2	4	6	2
Wheels per suspensions	2	2	2	2
Max. slope* at 50% of the capacity	23 %	9 %	11 %	23 %
Max. slope* at 75% of the capacity	17 %	9 %	5 %	17 %
Max. slope* at 100% of the capacity	11 %	5 %	2 %	11 %
PPU Diesel engine	55.4 kW at 2400 rpm (*)	55.4 kW at 2400 rpm (*)	55.4 kW at 2400 rpm (*)	55.4 kW at 2400 rpm (*)
Hybrid Power Pack Unit**	55.4 kW + Electric 60 kW	55.4 kW + Electric 60 kW	55.4 kW + Electric 60 kW	55.4 kW + Electric 60 kW
Electric Power Pack Unit	Electric 60 kW	Electric 60 kW	Electric 60 kW	Electric 60 kW

(*) on asphalted road surface (friction coefficient f=0.8)
**Hybrid PPU will increase the total length by 400 mm

ECO 504



MODEL	ECO 504	ECO 504 + JOKER	JOKER + ECO 504 + JOKER
Loading platform length	7500 mm	-	10000 mm
Loading platform height - loaded	870 +/-200 mm	870 +/-200 mm	870 +/-200 mm
Loading platform width	2350 mm	2350 mm	2350 mm
Dead weight	14000 kg	17000 kg	20000 kg
Max. total load	152000 kg	190000 kg	228000 kg
Max. payload	138000 kg	173000 kg	208000 kg
Suspensions	8	10	12
Driven/braked suspensions	4	4	4
Idle suspensions	4	6	8
Wheels per suspensions	2	2	2
Max. slope* at 50% of the capacity	25 %	15 %	17 %
Max. slope* at 75% of the capacity	17 %	12 %	9 %
Max. slope* at 100% of the capacity	11 %	7.5 %	5 %
PPU Diesel engine	55.4 kW at 2400 rpm (*)	55.4 kW at 2400 rpm (*)	55.4 kW at 2400 rpm (*)
Hybrid Power Pack Unit**	55.4 kW + Electric 60 kW	55.4 kW + Electric 60 kW	55.4 kW + Electric 60 kW
Electric Power Pack Unit	Electric 60 kW	Electric 60 kW	Electric 60 kW

(*) on asphalted road surface (friction coefficient f=0.8)
**Hybrid PPU will increase the total length by 400 mm

FINISHED PARTS AND COMPONENTS MADE OF CONCRETE



AVIATION & SPACE INDUSTRY



CONNECT & DRIVE



VEHICLE COMBINATIONS

You can combine up to four powerpack units in side-by-side, back-to-back, or open compound configurations. Each vehicle comes equipped with quick coupling connections for seamless linking.

Optional connections for mechanical, hydraulic, and electronic systems are available to suit your needs. The Power Pack Unit software is fully compatible with all vehicle generations, ensuring a future-oriented and flexible investment.



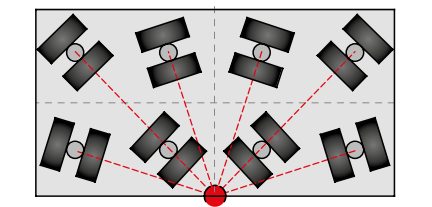


MANOEUVRING

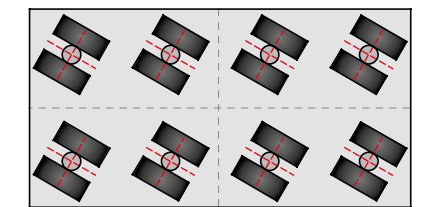
The electronic steering system offers full maneuverability and precision with a $+135^{\circ}/-135^{\circ}$ steering angle. The vehicle maintains full functionality even at a low height of 670 millimeters.

Utilizing its unique remote control, the Eco500 ensures high-performance steering and perfect synchronization, even when different Eco500 models are combined in the same convoy.

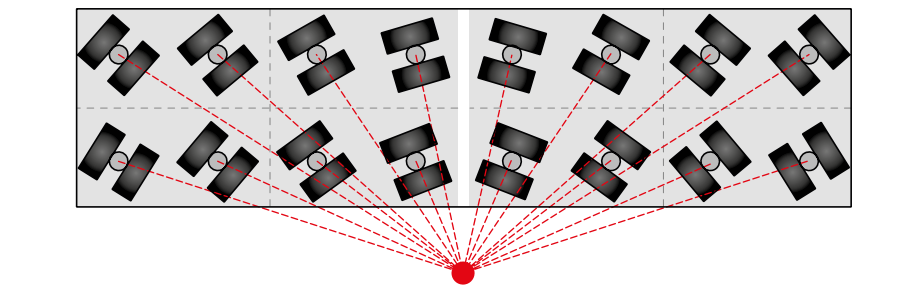
NORMAL DRIVE



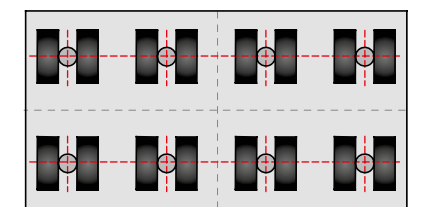
DIAGONAL DRIVE



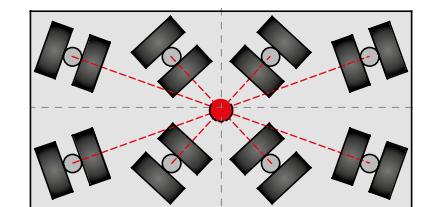
MULTI-DIRECTIONAL STEERING CONFIGURATIONS



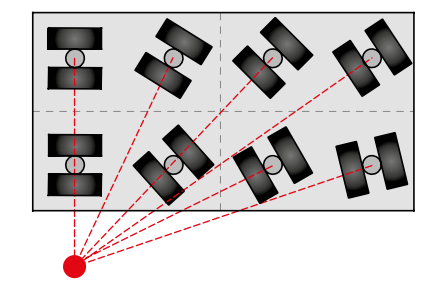
LATERAL DRIVE



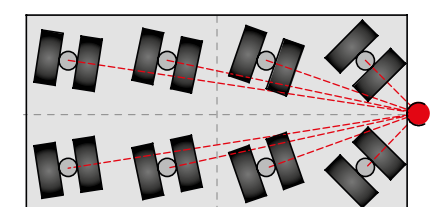
CIRCULAR DRIVE / CAROUSEL



TAIL STEERING



90°NORMAL DRIVE





HYDROSTATIC DRIVE SYSTEM

The Eco500's hydrostatic drive system allows precise and smooth movement in all directions. Equipped with power regulators, it maximizes the available torque for optimal performance. The hydraulic rotor design additionally saves space.

The Cometto hydrostatic transmission offers numerous benefits:

- » Ease control: Ensures precise movement and positioning
- » Power optimization: Maximizes available power at all times
- » Versatile speeds: Provides a wide range of speed options
- » Engine protection: Prevents engine overloads







YOUR FREEDOM OF CHOICE WITH 3 DIFFERENT POWER PACK TECHNOLOGIES

POWER PACKS DRIVE DIVERSITY

The Eco500 offers a wide range of Power Pack Units, ensuring maximum flexibility to meet your specific needs. Choose from electric, hybrid or diesel-powered models, all designed to comply with current and future emission standards.

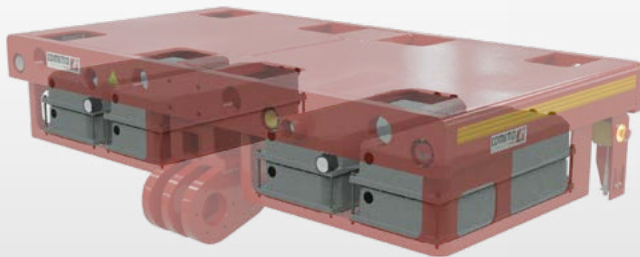
DIESEL POWER PACK

The diesel-powered Power Pack Unit offers an exceptional price-to-service ratio, delivering efficiency and robust performance.

MODEL	DIESEL 55.4 KW
Power Pack Length	2500 mm
Power Pack Height	630 mm
Power Pack Width	2300 mm
Fuel tank capacity	75 l
Oil tank capacity	145 (130) l
Engine model	HATZ 4H50TICD
Engine cylinder number	4L
Max Power	55.4 kW at 2500 rpm
Max Torque	240 Nm from 1600 rpm to 2100 rpm
Emission level	Stage V/TIER4F*
Exhaust system after-treatment	DPF system
Electric system	24 V / 65 A

MODEL	ELECTRIC 60 KW
Power Pack Length	2500 mm
Power Pack Height	630 mm
Power Pack Width	2300 mm
Oil tank capacity	145 (130) l
Engine model	BEST MOTOR - B-J0Z01906
Nominal voltage	621.6 VDC
Max Power	60 kW at 2500 rpm
Max Torque	275 Nm from 0 rpm to 1750 rpm
Battery net capacity	60 kWh
On-board charger	22 kW
Charging connection capacity	120 A
Electric system	24 V / 200 A

Optional: The additional battery pack doubles the vehicle's capacity and range, and it is cleverly integrated into a Joker chassis, expanding the loading platform area.



FULL ELECTRIC POWER PACK

Introducing latest components, engineered to deliver increased power and an extended range in pure electric operation. The battery has a net capacity of 60 kWh. The 22kW on-board fast charger is always included with the Eco500. This means that no more charging station is needed.

- » **Zero emissions:** Electric operation ensures a clean and eco-friendly solution, making it ideal for indoor environments where zero footprint is requested.
- » **Low noise level operation:** Enjoy reduced noise levels compared to traditional diesel-powered units, creating a more comfortable working environment.
- » **Instant torque:** Electric PPU deliver instant torque, providing responsive and efficient performance for various applications.

HYBRID POWER PACK

With hybrid technology, you can harness the power of a diesel engine while benefiting from the cleanliness of an electric motor, enabling zero-emission driving over certain distances. The lithium battery is recharged by driving which ensures continuous operation as well as by the built-in charger.



MODEL	HYBRID 60+55.4 KW
Power Pack Length	2900 mm
Power Pack Height	630 mm
Power Pack Width	2300 mm
Oil tank capacity	145 (130) l
Fuel tank capacity	75 l
Electric system	24 V / 200 A

Electric engine characteristics	
Engine model	BEST MOTOR - B-J0Z01906
Nominal voltage	621.6 VDC
Max Power	60 kW at 2500 rpm
Max Torque	275 Nm from 0 rpm to 1750 rpm
Battery net capacity	59.7 kWh
On-board charger	22 kW
Charging connection capacity	120 A

Diesel engine characteristics	
Engine model	HATZ 4H50TICD
Engine cylinder number	4L
Max Power	55.4 kW at 2500 rpm
Max Torque	240 Nm from 1600 rpm to 2100 rpm
Emission level	Stage V/TIER4F*
Exhaust system after-treatment	DPF system

LOGISTICS AND PORT OPERATIONS



PROJECT CARGO



FEATURES

SOFTWARE & ELECTRONICS

CMS: Cometto Management Software

The Cometto Management Software (CMS) efficiently controls all functions necessary for managing various projects. Equipped with a range of preset solutions, CMS maximizes efficiency and flexibility.

COSMO: Cometto Simulation Software

COSMO simplifies the process of configuring transport solutions:

» Transport management for convoy and multi-convoy:

Configure complete transport systems, whether hydraulically connected or not, with varying dimensions and axle numbers. COSMO's 3D simulation allows for easy drag-and-drop movement of vehicles, guiding users through complex configurations.

» Calculation and display of bending moment graphs:

Perform stability analysis and display bending moments, displacements, and shear stresses graphically. Real-time monitoring of convoy deformation is possible, allowing for advance definition of required support and optimizing suspension travel during transport. COSMO generates reports summarizing simulation results.



REMOTE CONTROL

Control your vehicle safely and effortlessly with our remote control system, seamlessly connected to the Power Pack Unit via cable or radio transmission. Featuring a 4.3" display, the remote provides comprehensive trailer and transport information, enhancing operator awareness and facilitating smooth operation.

COLOR TOUCH-SCREEN INTERFACE

Experience seamless control with our 12.1" color touch-screen display featuring anti-reflection technology, providing clear visibility in any environment. Access vital information on lifting, steering, and driving modes with ease. Operators have full command over vehicle data, including weight, speed, pressure, stability, and alarms. Our intuitive interface simplifies diagnostics and configuration, ensuring efficient handling of the Eco500. Quickly and easily adjust settings to suit your needs for optimal performance.



SHIPYARD INDUSTRY



PLANT RELOCATION AND INDUSTRIAL RENTAL SERVICES



OPTIONS

From specialized accessories to advanced components, you maximize the unique features of the Eco500 and achieve the optimal configuration for transporting your goods with ease and efficiency.

BATTERY PACK

The additional battery pack is cleverly integrated into a Joker chassis, which increases the loading area.

OBSTACLE DETECTION

Our advanced obstacle detection system ensures enhanced safety during operation. Using cutting-edge sensors, the system automatically detects obstacles in the vehicle's path and triggers an automatic stop to prevent collisions and ensure the safety of personnel and equipment.

TWIST LOCKS

These elements enable the safe connection of containers.

SPACER

Spacers of different lengths included between two driving units or a joker axle.

EQUAL LIFT SYSTEM

All the points are lifted at the same speed.

COUPLINGS

Connecting cables and hoses-open compound kit, back-to-back, side-by-side

NIGHTLIGHT KIT

A nightlight kit offers an optimal solution for safe and efficient night operation. Equipped with advanced lighting components, it significantly improves visibility in dark environments. Reliable in performance, our kit ensures not only increased safety but also enhanced comfort during your journeys.

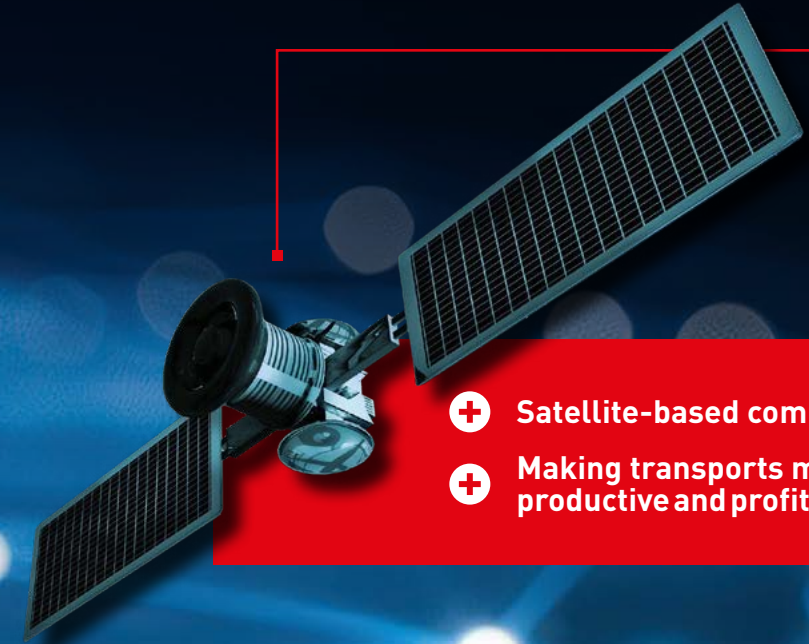
ELECTRONIC LEVELLING SYSTEM

Uneven surfaces pose no obstacle for the axles of the Eco500. The system comprises an inclinometer sensor and specialized software, working with the equal lift system. It maintains the platform in a horizontal position even on uneven terrain, ensuring stability and safety during operation.



TELEMAKHOS

REMOTE DIAGNOSIS SYSTEM



- ⊕ **Satellite-based communication**
- ⊕ **Making transports more productive and profitable**

Cometto leads the way in EMS technology, presenting an innovative open platform for worldwide remote assistance. TELEMAKHOS is always included with Eco500 vehicles and the system allows vehicle monitoring, access Cometto's service team technical. The system connects to remote through a mobile connection (3G/4G/5G), ensuring connectivity from any location around the globe.

DISCOVER THE ECO-FAMILY!

500
ECO

ECO₂500

2-axes lines type, with 2 driven suspensions



ECO_{2L}500

2-axes lines type, with 2 driven suspensions and long frame



ECO₄500

4-axes lines type, with 4 driven suspensions



1000
ECO

ECO₂1000

2-axes type, with 2 driven suspensions



ECO₄1000

4-axes type, with 2 or 4 driven suspensions



ECO_{4L}1000

4-axes type, with 2 or 4 driven suspensions and long frame



ECO₆1000

6-axes type, with 4 driven suspensions



1500
ECO

ECO₄1500

4-axes type, with 4 driven suspensions



ECO_{4L}1500

4-axes type, with 4 driven suspensions and long frame



ECO₆1500

6-axes type, with 4 driven suspensions



SEGMENTS OF ACTIVITY



MECHANICAL & PLANT ENGINEERING



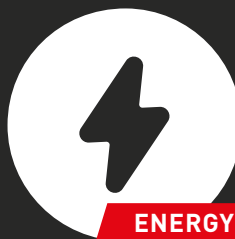
INFRASTRUCTURE & GLOBAL CONSTRUCTION



PROJECT CARGO



HEAVY STEEL CONSTRUCTION INDUSTRY



ENERGY



SHIPYARD INDUSTRY



FINISHED PARTS AND COMPONENTS MADE OF CONCRETE



WIND



PLANT RELOCATION AND INDUSTRIAL RENTAL SERVICES



AVIATION & SPACE INDUSTRY



LOGISTICS AND PORT OPERATIONS



NUCLEAR INDUSTRY & DECOMMISSIONING

Ultra-modern infrastructure. Optimally networked locations.

4 Production facilities in Luxembourg, Poland, Belgium, Italy

100% in-house

More than
1,350 employees

Production capacity of
3,000 vehicle units per year

175,000 m²
production area

Worldwide distribution throughout
125 countries

LUXEMBOURG - LENTZWEILER



BELGIUM - BÜLLINGEN



POLAND - GOLENIÓW



ITALY - BORGO SAN DALMAZZO



MAXPROTECT+

ACTIVE CORROSION PROTECTION

ALWAYS INCLUDED AT COMETTO!

Stress in use and the effects of weather put the steel construction of every vehicle to the test. Faymonville counters these challenges with its MAXProtect+ surface protection. This principle is applied as standard with every vehicle. Every stage – from shot-blasting and the full-surface metallisation with zinc/aluminium to the final coating – is carried out by Faymonville in-house, further developed and tested on the basis of meaningful parameters.



Experience all
steps here

More protection is impossible!

- + After a salt spray test lasting 2,400 hours, there is no red rust on a one millimetre deep scratch made beforehand
- + 100 % active protection against red rust
- + High zinc content provides for a self-healing effect
- + High edge protection due to mechanical anchoring
- + Optimal adhesion properties of the coating system in case of chain impacts or stone chips
- + The best protective effect in the automotive industry

The MAXProtect+ process sequence:

- 1 MACHINE BLASTING
 - 2 MANUAL BLASTING
 - 3 ZINC SPRAYING BY ELECTRIC ARC
 - 4 JOINT SEALING
 - 5 2-COMPONENT TOP COAT
 - 6 CAVITY SEALING
- OPTIONAL: SEAWATER-RESISTANT COMPLETE PRESERVATION

www.cometto.com



Via Cuneo 20,
12011 Borgo San Dalmazzo
ITALY

 +39 0171 263 300

cometto@cometto.com

Powered by **FAYMONVILLE**
GROUP 

